




JAYPEE GREENS
Kensington
PARK
YOUR VERY OWN SPACE AT WISH TOWN

A stylized graphic of a branch with several leaves, rendered in a lighter shade of blue than the background. The branch curves from the top left towards the bottom right, with leaves scattered along its length.

I am the resplendent shine of a flower,
Fiery in crimson joy upon the soil,
Scintillating, an ember in cyan,
I, never, fade in your world.

I am the comely face of divine creation,
Gazing at your heavenly abode
God bless you & many more who share the beauty abound
of Kensington Park at Jaypee Greens

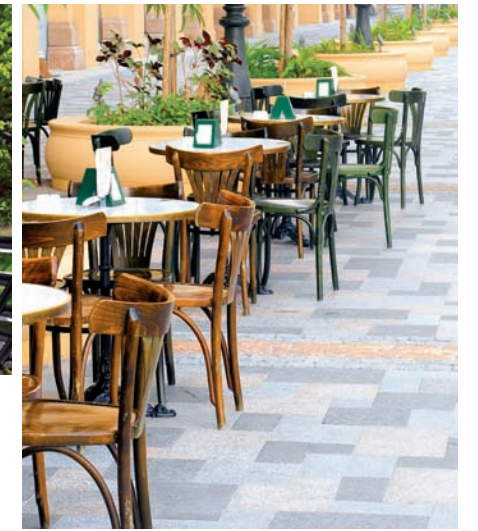


Life in all it's glory

Jaypee Greens Kensington Park is a unique gated residential community within Wish Town Jaypee Greens, Noida, created for exclusive living of select few, with dedicated spaces catering to all comforts you desired.

Kensington Park aims to be your ideal place- to not just romanticize but also live your dreams-each day, an exclusive abode from Jaypee Greens that precedes all precedents of lifestyle community living in India





Tradition of excellence

Jaypee Greens Kensington Park comprises of independent residential plots and apartment towers offering premium living. The apartments are offered in two types, viz., Kensington Park Apartments and Kensington Park Heights. Available in various sizes ranging from 1050 to 2100 sq ft and in 2, 3 and 4 BHK option.

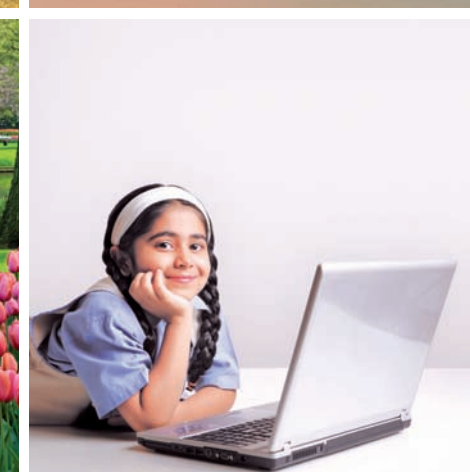
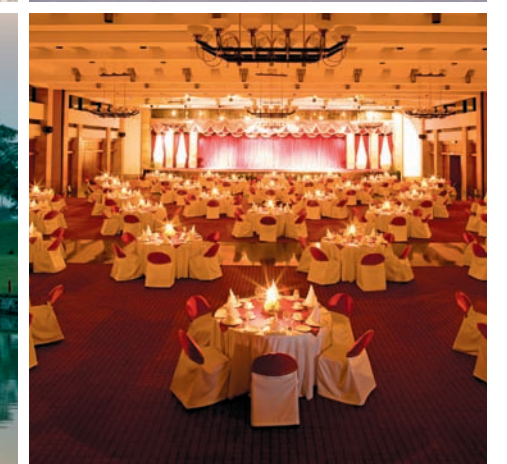
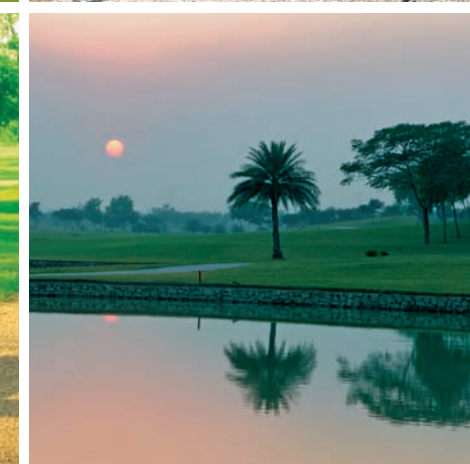
This elegant master planned community offers the very finest in resort-style living just off the Noida-Greater Noida Expressway.



Unlimited Advantages

Jaypee Greens Kensington Park is a part of Wish Town which is the largest township in Noida. It provides an array of superb community features.

- Acres of landscaped greens & a cluster of Zen thematic gardens interspersed within the whole community.
- Golf Course facilities by Graham Cooke.
- Elegant master planned gated township.
- Variety of sizes available for plots and apartments.
- Boomerang Clubhouse.
- Various Neighborhood Social Club.
- Multiple outdoor and indoor sports facilities for Tennis, Badminton, Squash, Table tennis etc.
- Kids play areas which will help to plan fun way for family day.
- Spiritual Centers with Temples, Meditation Centre, Discourse Halls, Yoga etc.
- Promenades featuring the finest selection of retail shops, boutiques and open bazaars.
- Town Centre with facilities like cultural galleries, restaurants & cafés, high-street retail, etc leading to the creation of a memorable sense of place with a unique community aspect.
- 'Commercial Zone' including facilities like 5 star hotel, shopping malls housing several top line brands, office spaces for small & large corporate houses based on the concept of 'walk to work'.
- Schools/colleges ranging from pre-nursery to post graduation level professional colleges. The various facilities offered in these educational institutes are Gymnasium, Swimming Pools, Auditorium, Playgrounds, Activity Courts, Music & Art Rooms, Library, and Lab Facilities with latest equipments, Cafeteria / Dining Halls and Classes for Special Education etc.
- 450 bed Jaypee Super Specialty Medical & Research Centre - well equipped with the best of medical equipments & healthcare services and will provide complete healthcare solutions.
- Project exquisitely designed by world renowned architects Arcop Associates and Landscape architects Capita Lovejoy of UK.
- Power and water back up and 3-tier security system are available round the clock.
- Adjacent to the Noida-Greater Noida expressway.
- Just 10 minutes drive from Ashram Chowk, Delhi.
- Proposed Metro connectivity.





LEGEND

	ENTRANCE LOBBY
	KP APARTMENTS- TYPE 1 (2 BHK + 1000 SFT) - 1000 SFT
	KP APARTMENTS- TYPE 2 (2 BHK + WORKER (TYPE 1) - 1000 SFT) (2 BHK + WORKER (TYPE 2) - 1000 SFT)
	KP APARTMENTS- TYPE 2A (2 BHK + WORKER (TYPE 1) - 1000 SFT) (2 BHK + WORKER (TYPE 2) - 1000 SFT)
	KP APARTMENTS- TYPE 3 (2 BHK + WORKER (TYPE 1) - 1000 SFT) (2 BHK + WORKER (TYPE 2) - 1000 SFT)
	KP APARTMENTS- TYPE 4 (2 BHK + WORKER (TYPE 1) - 1000 SFT) (2 BHK + WORKER (TYPE 2) - 1000 SFT)
	KP HEIGHTS- TYPE 1 (2 BHK + WORKER) - 1000 SFT
	KP HEIGHTS- TYPE 2 (2 BHK + WORKER) - 2100 SFT

Product Level Specification of Kensington Park Apartments

Structure	R.C.C Framed Structure
Living Room, Dining Room & Lounge	
Floors	Tiles / laminated floor
External Doors and Windows	Aluminium Powder Coated / UPVC
Walls	Internal : Oil Bound Distemper External : Good Quality external grade paint
Internal doors	Enamel painted Flush doors
Bedrooms & Dress	
Floors	Tiles / laminated floor
External Doors and Windows	Aluminium powder Coated / UPVC
Walls	Internal : Oil Bound Distemper External : Good Quality external grade paint
Internal doors	Enamel painted Flush doors
Toilets	
Floors	Anti Skid Ceramic / Vitrified Tiles
External Doors and Windows	Aluminium Powder Coated / UPVC
Fixture and Fittings	All provided of Standard Company make
Walls	Tiles in cladding up to 7' in shower area and 3'-6" in balance areas, Balance walls painted in Oil bound distemper
Internal doors	Enamel painted Flush doors
Kitchen	
Floors	Anti Skid Ceramic / Vitrified Tiles
External Doors and Windows	Aluminium Powder Coated / UPVC
Fixture and Fittings	Marble Top with sink
Walls	Ceramic Tiles 2'-6" above counter, Balance walls painted in Oil Bound Distemper
Balconies / Verandah	
Floors	Ceramic / Vitrified Mosaic Tiles
Railings	MS Railing as per Design
Lift Lobbies / Corridors	
Floors	Ceramic / Mosaic Tiles / Marble / Kota or equivalent
Walls	Oil Bound Distemper

Product Level Specification of Kensington Heights

Structure	R.C.C Framed Structure
Living Room, Dining Room & Lounge	
Floors	Tiles / laminated floor
External Doors and Windows	Aluminium Powder Coated / UPVC
Walls	Internal : Oil Bound Distemper External : Good Quality external grade paint
Internal doors	Enamel painted Flush doors
Bedrooms & Dress	
Floors	Tiles / laminated floor
External Doors and Windows	Aluminum Powder Coated / UPVC
Walls	Internal : Oil Bound Distemper External : Good Quality external grade paint
Internal doors	Enamel painted Flush doors
Toilets	
Floors	Anti Skid Ceramic / Vitrified Tiles
External Doors and Windows	Aluminum Powder Coated / UPVC
Fixture and Fittings	All provided of Standard Company make
Walls	Tiles in cladding up to 7' in shower area and 3'-6" in balance areas, Balance walls painted in Oil bound distemper
Internal doors	Enamel painted Flush doors
Kitchen	
Floors	Anti Skid Ceramic / Vitrified Tiles
External Doors and Windows	Aluminum Powder Coated / UPVC
Fixture and Fittings	Marble Top with sink
Walls	Ceramic Tiles 2'-6" above counter, Balance walls painted in Oil Bound Distemper
Balconies / Verandah	
Floors	Ceramic / Vitrified Mosaic Tiles
Railings	MS Railing as per Design
Lift Lobbies / Corridors	
Floors	Ceramic / Mosaic Tiles / Marble or equivalent
Walls	Oil Bound Distemper

Payment Plan

A. Installment Linked Plan			
S. No.	Payment Due On	Percentage (%) of BSP	Other applicable charges
1	Booking amount along with application form	As applicable *	
2	On or within 1 month from the date of issuance of PAL	20% of BSP (Less booking amount*)	
3	On or within 3 months from the date of issuance of PAL	10% of BSP	
4	On commencement of excavation	10% of BSP	
5	On laying of upper basement slab	10% of BSP	
6	On laying of 3rd floor Roof Slab	7.5% of BSP	Car park charges
7	On laying of 6th floor Roof Slab	7.5% of BSP	IDC Charges
8	On laying of 9th floor Roof Slab	6.5% of BSP	EDC Charges
9	On laying of 12th floor Roof Slab	6.5% of BSP	
10	On laying of 15th floor Roof Slab	6% of BSP	Electric substation charges
11	On laying of top floor Roof Slab	6% of BSP	
12	On completion of internal plaster & flooring within the apartment	5% of BSP	
13	On offer of possession	5% of BSP	Social Club Charges + IFMD + Maintenance advance + One Time Lease Rent Charges + Additional Basement storage charges (optional)
	TOTAL	100%	

***Booking Amount: 5% of BSP**

Cheque should be drawn in favour of **'Jaypee Infratech Limited'**

Notes:

1. Installments under S. No. 4 - 12 may run concurrently with those under S. No. 1 - 3 based on the physical progress of Work at site.
2. The demand letter for Installments at S. No. 4 to 12 shall be sent in advance providing for payment period of up to 15 days.

B. Down Payment Plan			
S.No	Payment Due On	Percentage (%) of BSP	Other Applicable Charges
1	Booking amount along with application form	As applicable *	
2	On or within 1 month from the date of issuance of PAL	95% of BSP (Less booking amount*)	IDC + EDC+ Car park + Electric substation charges
3	On offer of possession	5% of BSP	Social Club Charges + IFMD + Maintenance advance + One Time Lease Rent Charges + Additional Basement Storage charges (optional)
	TOTAL	100%	

Kensington Park Apartment

Note: Down payment discount upto 12% of BSP based on the stage of construction at the time of issuance of PAL

Kensington Park Height

Note: Down payment discount upto 15% of BSP based on the stage of construction at the time of issuance of PAL



**JAYPEE GREENS, WISH TOWN, NOIDA
MASTER PLAN**

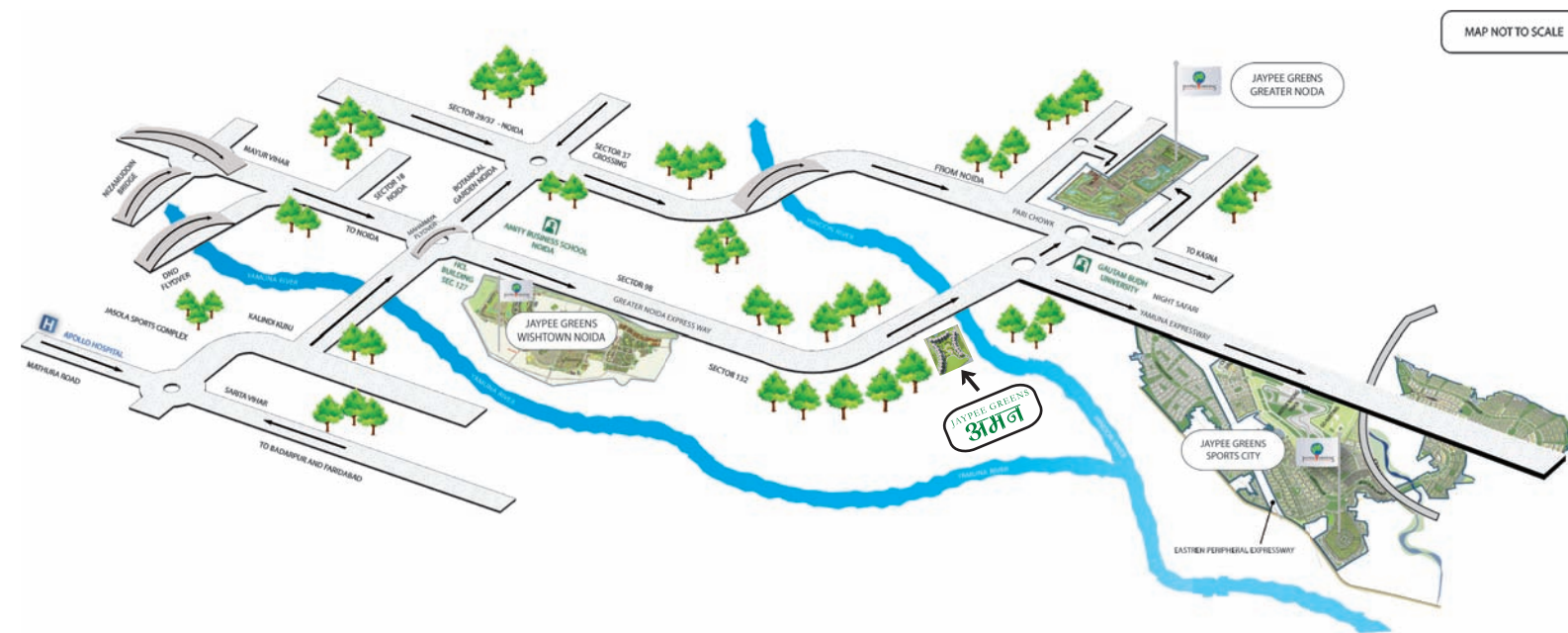
Location Details

A symbol of modern day town planning, Noida is the fastest growing township in the National Capital Region, with international standard infrastructure.

Jaypee Greens Noida is located 4 kms from the Amity intersection, thereby enjoying good connectivity and locational advantage with respect to the city master plan. Residential, commercial, institutional and recreational facilities have been simultaneously developed in a planned manner to make it a prestigious address.

Accessibility: Easy access to Delhi and Greater Noida through the 8-lane Yamuna Expressway

- 10 minutes from DND Flyway
- 15 minutes from Greater Noida
- 20 minutes from South Delhi
- 25 minutes from Connaught Place
- 45 minutes from International Airport





Sales Office: Jaypee Greens, Sector 128, Noida – 201304 (U.P), India.
Phone: +91 120 4609000, Fax: + 91 120 4609160 Mobile: +91 9999988901 / 2
E-mail: kensingtonapartments@jalindia.co.in Website: www.jaypeegreens.com

This brochure is conceptual and not a legal offer and gives only a bird's eye view of the project. The content in this brochure and the five enclosed inserts, including the building plans, elevations, floor plans, location details, areas, designs, layouts, specifications and payment plan etc. are tentative and are merely indicative in nature and are subject to variations and modifications at the sole discretion of the competent, statutory authorities or the company.